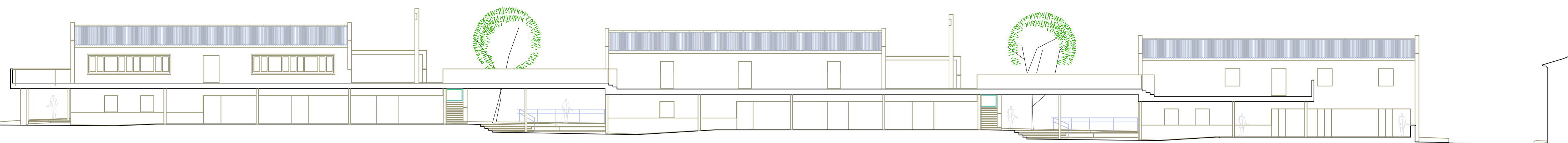
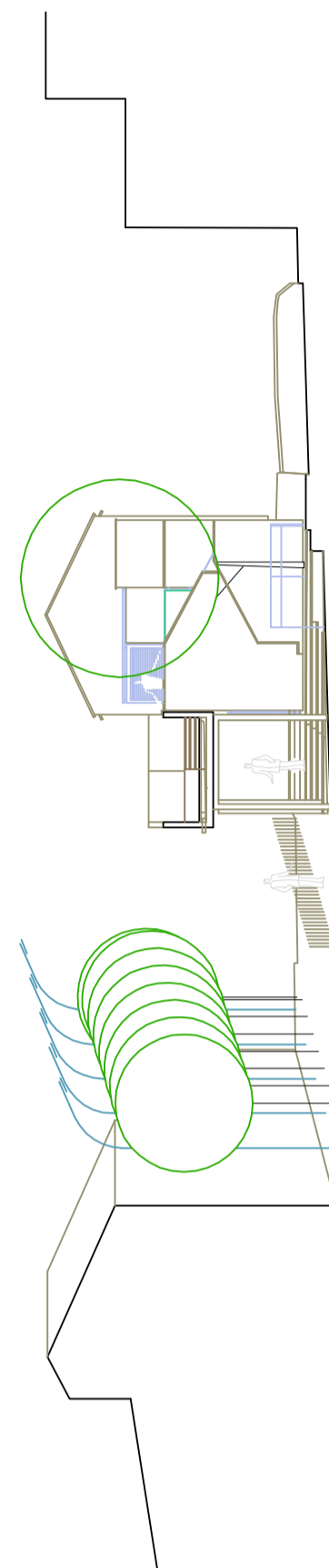


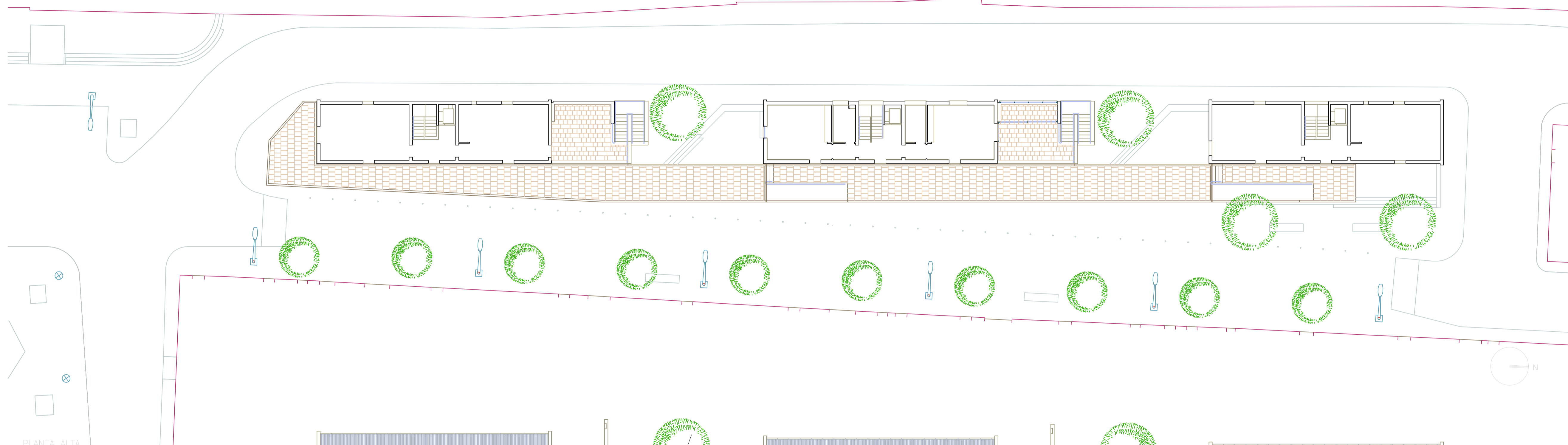
SECCIÓN LONGITUDINAL



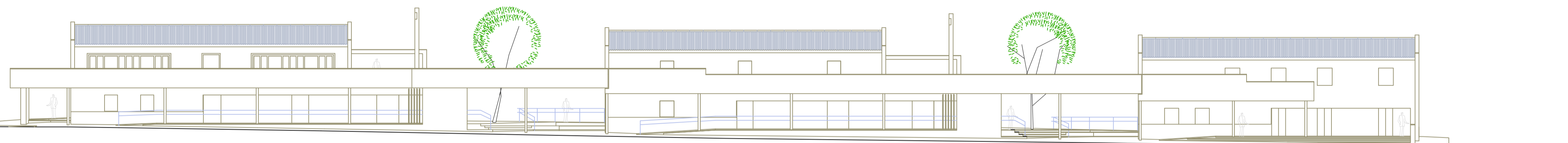
SECCIÓN TRANSVERSAL



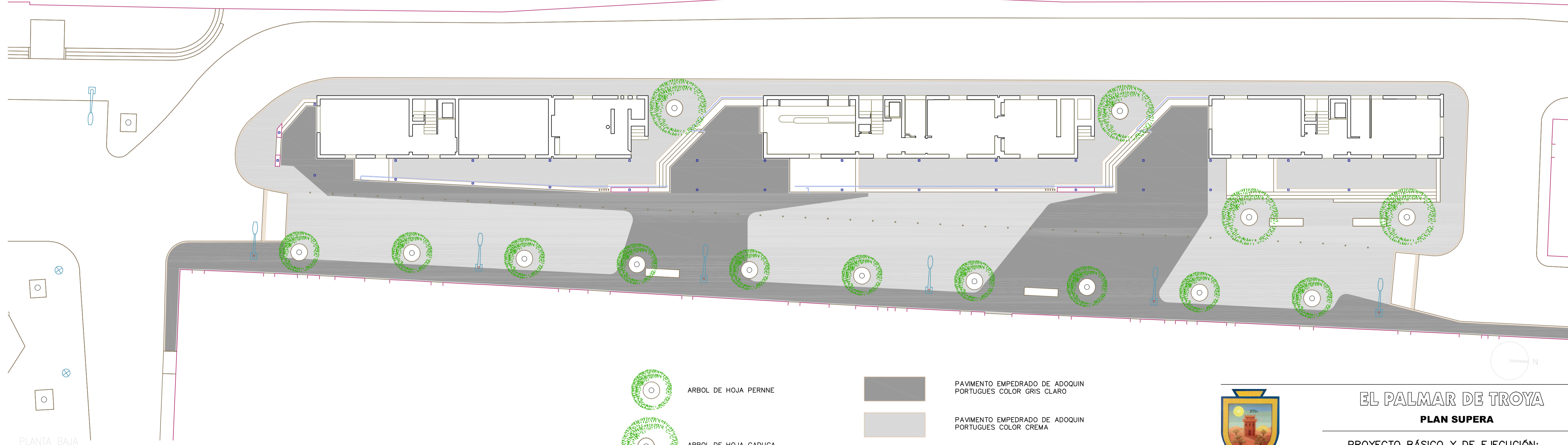
PLANTA ALTA


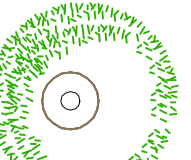




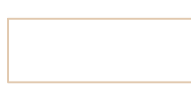

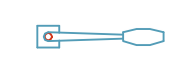
ALZADO DEL CONJUNTO



PLANTA BAJA



-  ARBOL DE HOJA PERNE
-  ARBOL DE HOJA CADUCA

-  PAVIMENTO EMPEDRADO DE ADOQUIN PORTUGUES COLOR GRIS CLARO
-  PAVIMENTO EMPEDRADO DE ADOQUIN PORTUGUES COLOR CREMA
-  CREMA MARFIL (RAMPA, REMATES Y ESCALERAS)
-  BANCO PREFABRICADO (MOD. BARCELONA)
-  FAROLA



EL PALMAR DE TROYA PLAN SUPERA

PROYECTO BÁSICO Y DE EJECUCIÓN:
REFORMA DE LA CALLE FÉLIX RODRIGUEZ DE LA FUENTE